



Volume 3

# HY-PRO

Milling Series



# Index

---



HYP-CR-HI-WEMS  
4 Flutes - Variable lead type ..... PAGE 4

HYP-CR-HD-WEMS  
4 Flutes - Variable lead type ..... PAGE 5

HYP-F1  
1 Flute - Straight Shank ..... PAGE 6

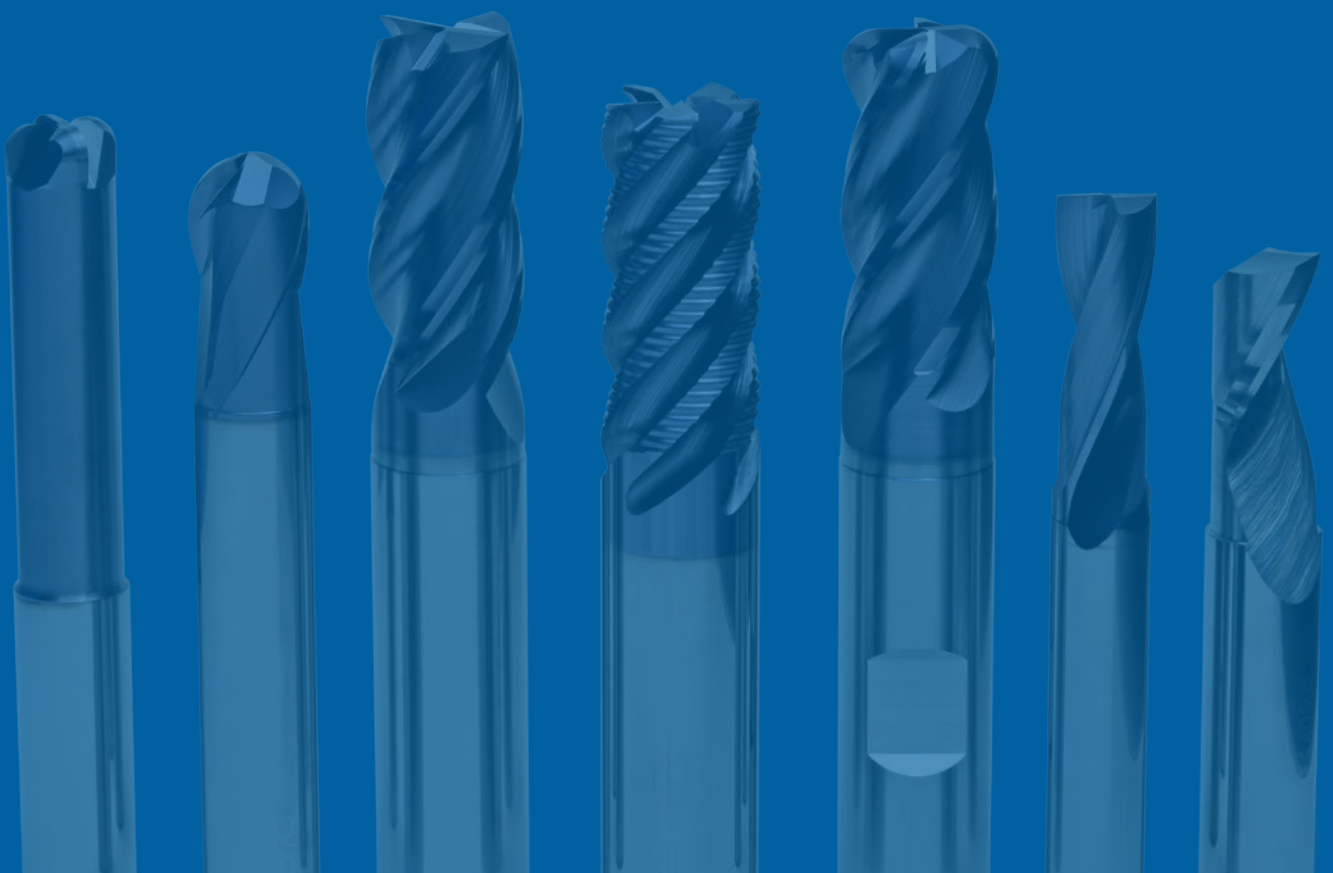
HYP-HI-(W)EMS  
4 Flutes - Variable lead type ..... PAGE 7

HYP-HP-WRESF  
For general roughing ..... PAGE 8

HYP-HS-CRE  
4 Flutes - Corner radius ..... PAGE 9

HYP-SB-EBD  
2 Flutes - Center cutting ..... PAGE 10

HYP-ZDS  
2 Flutes - counterboring ..... PAGE 11



## Milling

- 4 flutes
- Variable lead type

- 4 Schneiden
- Variabler Führung

- 4 denti
- Passo variabile

- 4 lèvres
- Hélice variable

- 4 ağızlı
- Değişken helisel açılı tip

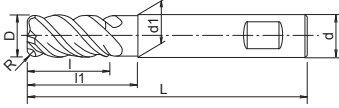
- 4 skær
- Variabel helix

- 4 skär
- Variabel helix

- 4 labios
- Introduce la helice variable

- 4 режущих кромки
- С переменным углом наклона витков

- 4 ostrzowy
- Z nierównomiernym rozkładem zębów



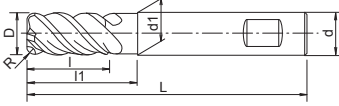
EDP	D	R	L	l	l1	d1	d	Price
4832004011	4	0,5	57	11	-	-	6	
4832005011	5	0,5	57	13	-	-	6	
4832006011	6	0,5	57	13	20	5,8	6	
4832006012	6	1	57	13	20	5,8	6	
4832006013	6	1,5	57	13	20	5,8	6	
4832006014	6	2	57	13	20	5,8	6	
4832008011	8	0,5	63	19	25	7,8	8	
4832008012	8	1	63	19	25	7,8	8	
4832008013	8	1,5	63	19	25	7,8	8	
4832008014	8	2	63	19	25	7,8	8	
4832010011	10	0,5	72	22	30	9,8	10	
4832010012	10	1	72	22	30	9,8	10	
4832010013	10	1,5	72	22	30	9,8	10	
4832010014	10	2	72	22	30	9,8	10	
4832010016	10	3	72	22	30	9,8	10	
4832012011	12	0,5	83	26	38	11,8	12	
4832012012	12	1	83	26	38	11,8	12	
4832012013	12	1,5	83	26	38	11,8	12	
4832012014	12	2	83	26	38	11,8	12	
4832012016	12	3	83	26	38	11,8	12	
4832016011	16	0,5	92	32	45	15,8	16	
4832016012	16	1	92	32	45	15,8	16	
4832016014	16	2	92	32	45	15,8	16	
4832016016	16	3	92	32	45	15,8	16	
4832016018	16	4	92	32	45	15,8	16	
4832020012	20	1	104	38	60	19,8	20	
4832020014	20	2	104	38	60	19,8	20	
4832020016	20	3	104	38	60	19,8	20	
4832020018	20	4	104	38	60	19,8	20	
4832020020	20	5	104	38	60	19,8	20	

Applications - Anwendungen - Applicazioni - Applications - Applikation - Applikation - Aplicaciones - Применение - Uygulama - Zastosowania

~40 HRC	~45 HRC	~55 HRC	~60 HRC	~65 HRC	SUS ~35 HRC	GG-GGG ~350 HB
☉	☉	○			☉	☉
Cu	Al	Graphite	Ti	HRS	Plast.	
			☉	☉		

## Milling

- 4 flutes
- 4 Schneiden
- 4 denti
- 4 lèvres
- 4 ağızlı
- Variable lead type
- Variabler Führung
- Passo variabile
- Hélice variable
- Değişken helisel açılı tip
- 4 skær
- 4 skär
- 4 labios
- 4 режущих кромки
- 4 ostrzowy
- Variabel helix
- Variabel helix
- Introduce la helice variable
- С переменным углом наклона витков
- Z nierównomiernym rozkładem zębów



EDP	D	R	L	l	l1	d1	d	Price
4833006010	6	0,25	57	13	20	5,8	6	
4833008010	8	0,25	63	19	25	7,8	8	
4833010010	10	0,25	72	22	30	9,8	10	
4833012010	12	0,25	83	26	38	11,8	12	
4833016010	16	0,25	92	32	45	15,8	16	
4833020010	20	0,25	104	38	60	19,8	20	

Applications - Anwendungen - Applicazioni - Applications - Applikation - Applikation - Aplicaciones - Применение - Uygulama - Zastosowania						
~40 HRC	~45 HRC	~55 HRC	~60 HRC	~65 HRC	SUS ~35 HRC	GG-GGG ~350 HB
☉	☉	○			☉	☉
Cu	Al	Graphite	Ti	HRS	Plast.	
			☉	☉		

## Milling

■ 1 Flute  
■ Straight shank

■ 1 Schneide  
■ Zylindrischer Schaft

■ 1 dento  
■ Gambo cilindrico

■ 1 lèvre  
■ Queue cylindrique

■ 1 kanal  
■ Düz şaft

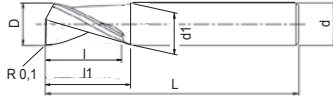
■ 1 skær  
■ Cylindrisk skaft

■ 1 skär  
■ Cylindriskt skaft

■ 1 labio  
■ Mango sencillo

■ 1 режущих кромки  
■ Прямой хвостовик

■ 1 ostrzow  
■ Chwył walcowy



EDP	D	L	l	l1	d1	d	ZΔ	Price
48360030	3	40	4	5	-	6	1	
48360040	4	50	5	6	-	6	1	
48360050	5	50	7	8	-	6	1	
48360060	6	50	8	15	5,4	6	1	
48360080	8	60	11	20	7	8	1	
48360100	10	70	13	25	9	10	1	
48360120	12	70	15	30	11	12	1	

Applications - Anwendungen - Applicazioni - Applications - Applikation - Applikation - Aplicaciones - Применение - Uygulama - Zastosowania

~40 HRC	~45 HRC	~55 HRC	~60 HRC	~65 HRC	SUS ~35 HRC	GG-GGG ~350 HB
Cu	Al	Graphite	Ti	HRS	Plast.	
	○				○	

## Milling

- 4 flutes
- Variable lead type

- 4 Schneiden
- Variabler Führung

- 4 denti
- Passo variabile

- 4 lèvres
- Hélice variable

- 4 ağızlı
- Değişken helisel açılı tip

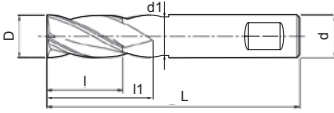
- 4 skær
- Variabel helix

- 4 skär
- Variabel helix

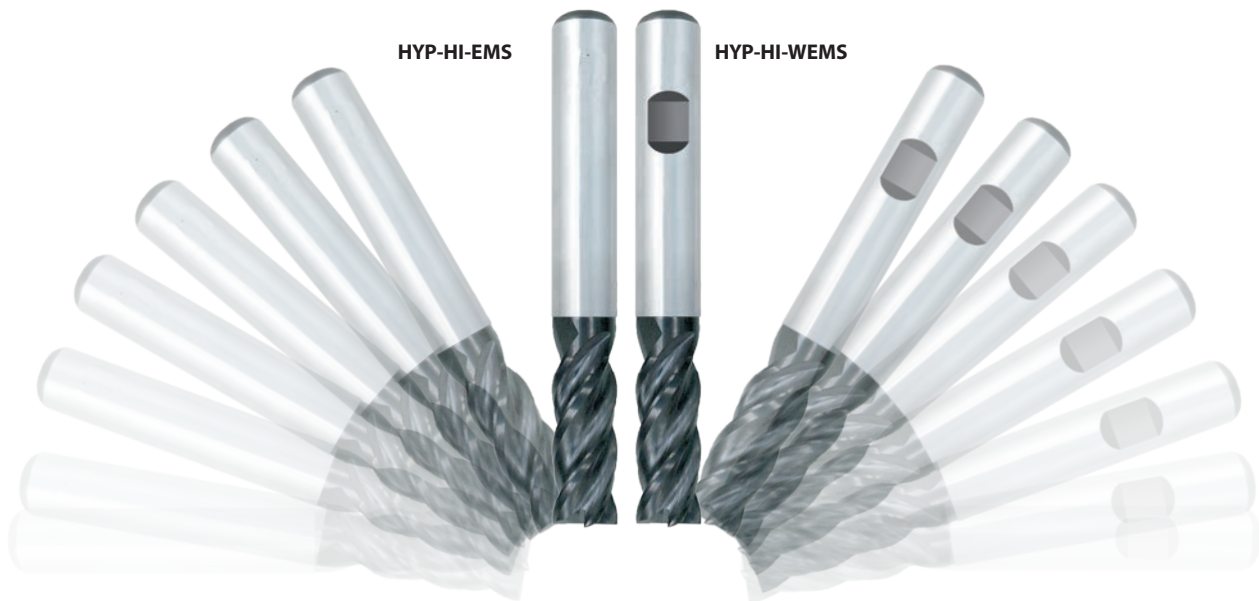
- 4 labios
- Introduce la helice variable

- 4 режущих кромки
- С переменным углом наклона витков

- 4 ostrzowy
- Z nierównomiernym rozkładem zębów



EDP	Type	D	L	l	l1	d1	d	Price
48320040	HYP-HI-EMS	4	57	11	-	-	6	
48320050	HYP-HI-EMS	5	57	13	-	-	6	
48320060	HYP-HI-EMS	6	57	13	20	5,8	6	
48320080	HYP-HI-EMS	8	63	19	25	7,8	8	
48320100	HYP-HI-EMS	10	72	22	30	9,8	10	
48320120	HYP-HI-EMS	12	83	26	38	11,8	12	
48320160	HYP-HI-EMS	16	92	32	45	15,8	16	
48320200	HYP-HI-EMS	20	104	38	60	19,8	20	
483200401	HYP-HI-WEMS	4	57	11	-	-	6	
483200501	HYP-HI-WEMS	5	57	13	-	-	6	
483200601	HYP-HI-WEMS	6	57	13	20	5,8	6	
483200801	HYP-HI-WEMS	8	63	19	25	7,8	8	
483201001	HYP-HI-WEMS	10	72	22	30	9,8	10	
483201201	HYP-HI-WEMS	12	83	26	38	11,8	12	
483201601	HYP-HI-WEMS	16	92	32	45	15,8	16	
483202001	HYP-HI-WEMS	20	104	38	60	19,8	20	



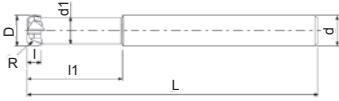
Applications - Anwendungen - Applicazioni - Applications - Applikation - Applikation - Aplicaciones - Применение - Uygulama - Zastosowania						
~40 HRC	~45 HRC	~55 HRC	~60 HRC	~65 HRC	SUS ~35 HRC	GG-GGG ~350 HB
☉	☉	○			☉	☉
Cu	Al	Graphite	Ti	HRS	Plast.	
			☉	☉		





## Milling

- 4 flutes
- 4 Schneiden
- 4 denti
- 4 lèvres
- 4 ağızlı
- Corner radius
- Mehrschneider mit Eckenradius
- Frese toriche
- Fraise à rayon
- Değişken helisel açılı tip
- 4 skær
- 4 skär
- 4 labios
- 4 режущих кромки
- 4 ostrzowy
- hjørneradius
- Hörnradie
- Vertice radio
- Концевые фрезы с радиусом
- Z nierównomiernym rozkładem zębów

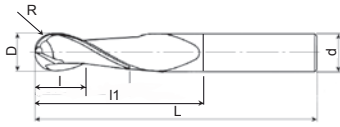


EDP	D	R	L	l1	l	d1	d	ZΔ	Price
48340060	6	1,5	57	24	2,5	5	6	4	
48340080	8	2	63	32	3,5	7	8	4	
48340100	10	2	72	40	4	9	10	4	
48340120	12	3	83	48	5	11	12	4	

Applications - Anwendungen - Applicazioni - Applications - Applikation - Applikation - Aplicaciones - Применение - Uygulama - Zastosowania						
~40 HRC	~45 HRC	~55 HRC	~60 HRC	~65 HRC	SUS ~35 HRC	GG-GGG ~350 HB
☉	☉	☉	☉	○		☉
Cu	Al	Graphite	Ti	HRS	Plast.	

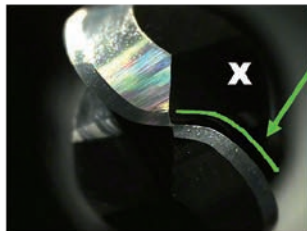
## Milling

- 2 flutes
- 2 Schneiden
- 2 denti
- 2 lèvres
- 2 ağızlı
- Center cutting
- Zentrumschneidend
- Taglio al centro
- Coupe au centre
- Merkezden kesme
- 2 skær
- 2 skär
- 2 labios
- 2 режущих кромки
- 2 ostrzowy
- Borende
- Borrande
- Corte central
- Режущий центр
- Centralne ostrze



EDP	D	R	L	l	l1	d	ZΔ	Price
48350030	3	1,5	57	4	9	6	2	
48350040	4	2	57	5	12	6	2	
48350050	5	2,5	57	6	15	6	2	
48350060	6	3	57	7	18	6	2	
48350080	8	4	63	9	20	8	2	
48350100	10	5	72	11	25	10	2	
48351200	12	6	83	13	25	12	2	

### HYPRO HYP-SB-EBD Geometry



Long cutting edge

$X > Y$

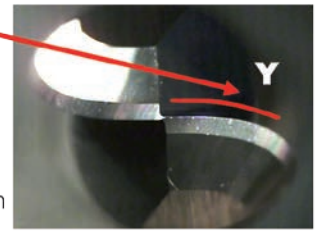
- Less torque
- Less heat build-up
- Better surface finish
- Long tool life

### Standard Geometry

Short cutting edge

$X > Y$

- Normal torque
- Normal heat build-up
- Average surface finish
- Standard tool life



Applications - Anwendungen - Applicazioni - Applications - Applikation - Applikation - Aplicaciones - Применение - Uygulama - Zastosowania

~40 HRC	~45 HRC	~55 HRC	~60 HRC	~65 HRC	SUS ~35 HRC	GG-GGG ~350 HB
⊙	⊙	⊙			○	⊙
Cu	Al	Graphite	Ti	HRS	Plast.	
○	○					





shaping your dreams

#### **OSG EUROPE LOGISTICS**

Avenue Lavoisier 1  
B-1300 Z.I. Wavre - Nord  
Belgium  
Tel.: +32 10 23 05 07  
Fax: +32 10 23 05 11  
info@osgeurope.com

#### **OSG BELUX**

Avenue Lavoisier 1  
B-1300 Z.I. Wavre - Nord  
Belgium  
Tel.: +32 10 23 05 11  
Fax: +32 10 23 05 31  
info@osg-belgium.com

#### **OSG FRANCE**

Parc Icade, Paris Nord 2  
Immeuble "Le Rimbaud"  
22 Avenue des Nations  
CS66191 - 93420 Villepinte  
France  
Tel.: +33 1 49 90 10 10  
Fax: +33 1 49 90 10 15  
sales@osg-france.com

#### **OSG NETHERLANDS**

Bedrijfsweg 5 - 3481 MG Harmelen  
Postbus 50 - 3480 DB Harmelen  
The Netherlands  
Tel.: +31 348 44 2764  
Fax: +31 348 44 2144  
info@osg-nl.com

#### **OSG UK**

Shelton house, 5 Bentalls  
Pipps Hill Ind Est, Basildon Essex SS14 3BY  
United Kingdom  
Tel.: +44 845 305 1066  
Fax: +44 845 305 1067  
sales@osg-uk.com

#### **SLOVAKIA**

Branch office of OSG Europe Logistics s.a.  
Tel: +32 10 23 05 04  
Fax: +32 10 23 05 31  
info@osg-belgium.com  
http://ee.osgeurope.com

#### **OSG POLAND**

59 Złota St  
00-120 Warsaw  
Poland

#### **OSG GERMANY**

Karl-Ehmann-Str. 25  
D - 73037 Göppingen  
Germany  
Tel.: +49 7161 6064 - 0  
Fax: +49 7161 6064 - 444  
info@osg-germany.de

#### **OSG SCANDINAVIA**

(For Scandinavian countries)  
Langebjergergaenget 16  
4000 Roskilde  
Denmark  
Tel.: +45 46 75 65 55  
Fax: +45 46 75 67 00  
osg@osg-scandinavia.com

#### **SWEDEN**

Branch office of OSG SCANDINAVIA  
Abrahams Gränd 8  
295 35 Bromölla  
Sweden  
Tel: +46 40 41 22 55  
Fax: +46 40 41 32 55  
osg@osg-scandinavia.com

#### **OSG COMAHER**

Bekolarra 4  
E - 01010 Vitoria-Gasteiz  
Spain  
Tel.: +34 945 242 400  
Fax: +34 945 228 883  
osg-comaher@osg-comaher.com

#### **OSG ITALIA**

Via Cirenaica n. 52 int. 61/63  
I - 10142 Torino  
Italy  
Tel.: +39 0117705211  
Fax: +39 0117071402  
info@osg-italia.it

#### **OSG TURKEY**

Rami Kışla Cad.No:56 Eyüp  
Istanbul 34056  
Turkey  
Tel.+90 212 565 24 00  
Fax: +90 212 565 44 00  
info@osg-turkey.com

#### **ROMSAN INTERNATIONAL CO. SRL**

Reprezentant Exclusiv OSG  
23-25, Nerva Traian Street  
031044 Bucuresti  
România  
Tel.: +40 021 322 07 47  
Fax: +40 021 321 56 00  
romsan.int@romsan.ro

#### **OSG EUROPE LOGISTICS S.A.**

All rights reserved. © OSG Europe 2016.

The contents of this catalogue are provided to you for viewing only. They are not intended for reproduction either in part or in whole in this or other medium. They cannot be copied, used to create derivation work or used for any reason, by means without the express, written permission of the copyright owner. If prices are stated, they are netto unit-prices and any eventual tax(es) have to be added. The company is not responsible for any printing error in technical, price and/or any other data.

Tool specifications subject to change without notice.

[www.osgeurope.com](http://www.osgeurope.com)

